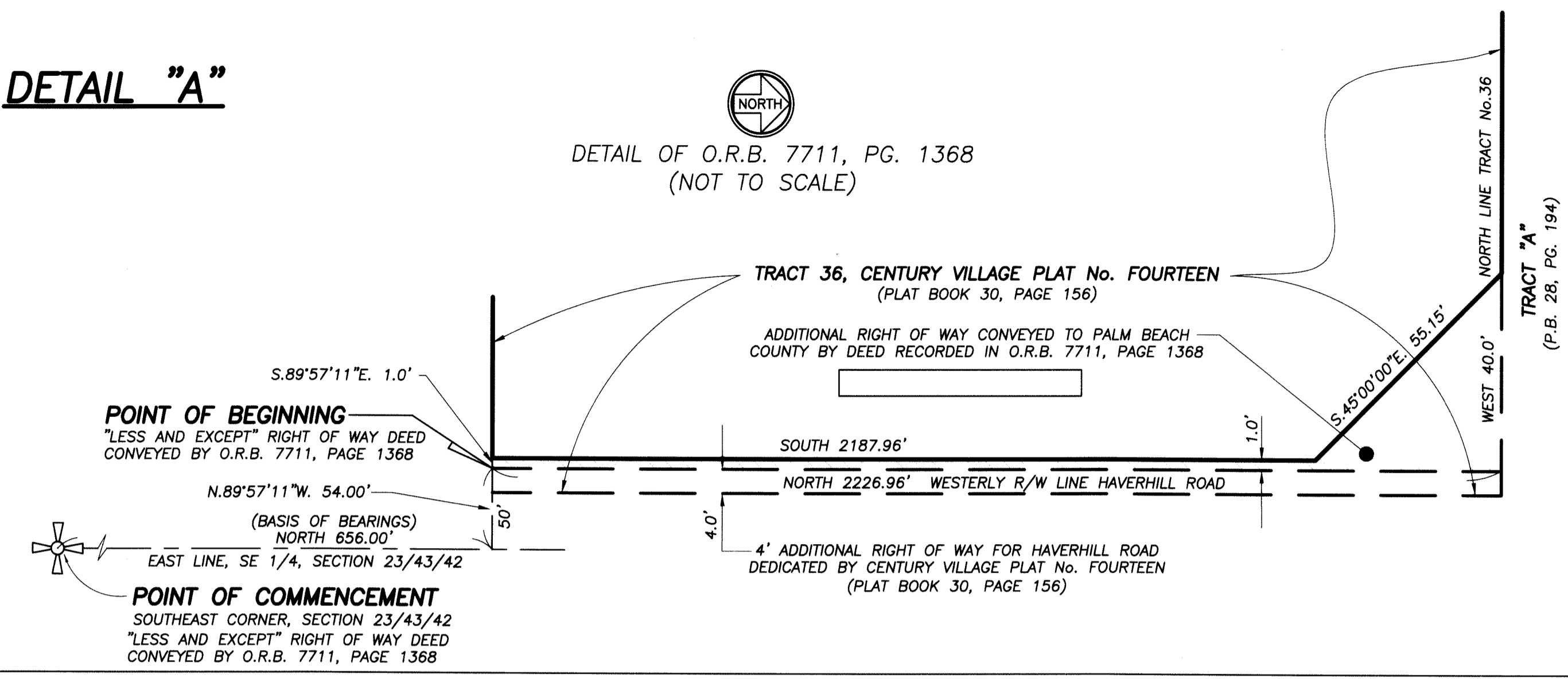


DETAIL "A"



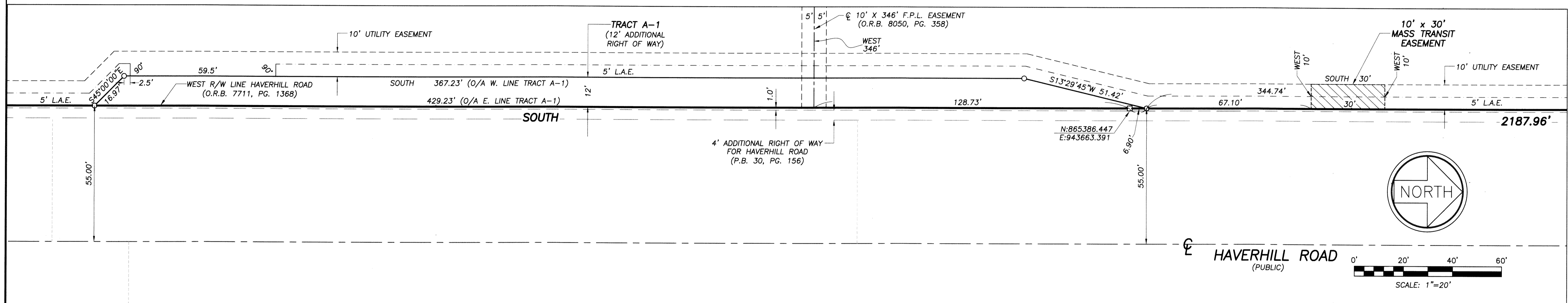
REFLECTION BAY, PARCEL 1 a T.N.D., and PARCEL 2 a P.U.D.

BEING A REPLAT OF TRACT 36, OF CENTURY VILLAGE PLAT NO. FOURTEEN, ACCORDING TO THE PLAT THEREOF RECORDED IN PLAT BOOK 30, PAGES 156 AND 157, OF THE PUBLIC RECORDS OF PALM BEACH COUNTY, FLORIDA, SECTION 23, TOWNSHIP 43 SOUTH, RANGE 42 EAST

3

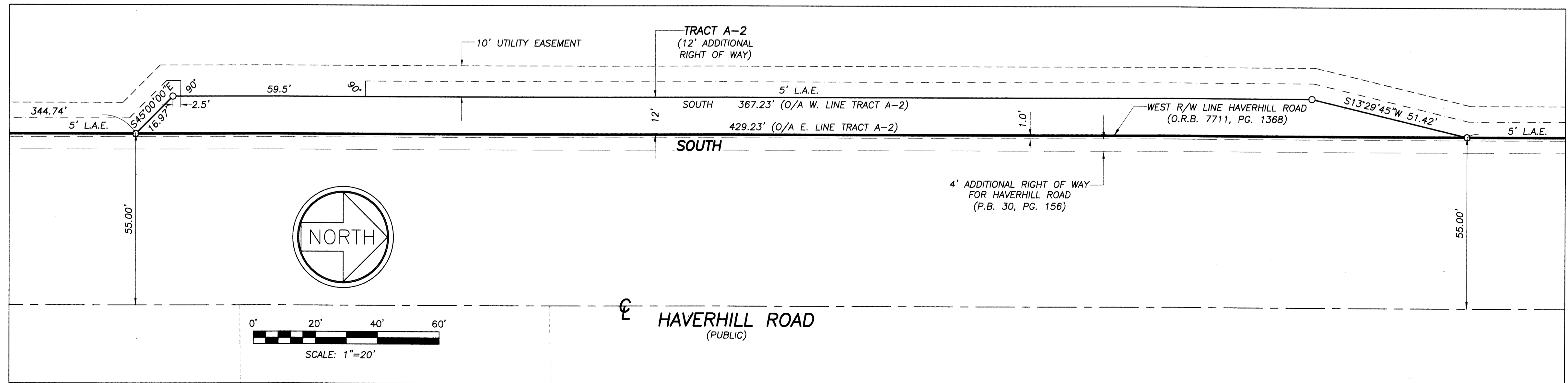
SHEET 3 OF 3

THIS INSTRUMENT PREPARED BY:
ROBERT J. CAJAL
WALLACE SURVEYING CORPORATION
LICENSED BUSINESS NO.: 4569
5553 VILLAGE BOULEVARD
WEST PALM BEACH, FL 33407
561/640-4551



DETAIL "B"

- ABBREVIATIONS/LEGEND**
- = 4"x4" CONCRETE MONUMENT FOUND (AS NOTED)
 - = 4"x4" CONCRETE MONUMENT SET WITH DISK STAMPED "P.R.M. LB #4569"
 - = SET 5/8" IRON ROD & CAP STAMPED "WALLACE LB #4569"
 - = FOUND IRON ROD AND CAP (AS NOTED)
 - ⊙ = SET MAG NAIL & DISK STAMPED "P.R.M. LB #4569"
 - C, C/L = CENTERLINE
 - P.B.C. = PALM BEACH COUNTY
 - P.B. = PLAT BOOK
 - PG. = PAGE
 - P.R.M. = PERMANENT REFERENCE MONUMENT
 - N. = NORTHING
 - E. = EASTING
 - A.K.A. = ALSO KNOWN AS
 - D.B. = DEED BOOK
 - ESMT. = EASEMENT
 - L.A.E. = LIMITED ACCESS EASEMENT
 - L.B. = LICENSED BUSINESS
 - O/A = OVERALL
 - O.R.B. = OFFICIAL RECORDS BOOK
 - R.P.B. = ROAD PLAT BOOK
 - R/W = RIGHT-OF-WAY
 - S.U.A. = SEACOAST UTILITY AUTHORITY
 - U.E. = UTILITY EASEMENT
 - W.C. = WITNESS CORNER



DETAIL "C"